

7.1 Introduction to networks & e-safety

Networks



What is a network?

A network is when two or more devices (not necessarily computers) are connected to each other

Passwords

Used to help secure data from unauthorised access

Setting your password

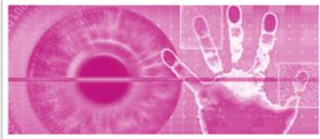


• Password rules

- It must be a minimum of 8 characters
- A CAPITAL letter
- A lower case letter
- A number
- Not include your name

Other methods of security

- Biometrics
- Two factor authentication



The internet and WWW



- The World Wide Web is any website or webpage which you might visit on a browser on a device
- The internet is a network of networks and includes lots of different parts



Email - Is short for electronic mail

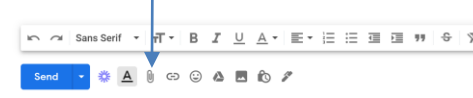
Features of an email

Who is the message to



Always include a subject in the email so the recipient knows what the email is about

Adding an attachment e.g., file, image to the email



Carbon copy – copying another recipient into the email

Blind Carbon Copy – means that you can copy someone into an email without the recipient knowing

Cloud Computing



Using cloud storage means you do not need to carry round a storage device like a USB or a hard drive.

The cloud uses an internet connection (not the WWW)

One of the advantages of the cloud is the ability to hold a huge selection of files without having to pay for expensive storage (as you usually rent the space).

This is the case for popular cloud storage devices like OneDrive, Google Drive and Dropbox. Other famous cloud computing companies are Netflix, Spotify & Amazon Prime.

Cyber security

Personal information (personal data) - Information that can be used to distinguish or trace an individual's **identity**.

Social Engineering - the manipulation of people into carrying out specific actions, or divulging information, that is of use to an attacker.

Cyber Aware Behaviours

1. Use a strong and different password for all accounts.
2. Turn on 2-step verification (2SV)
3. Back up data
4. Update devices



7.1 introduction to networks and emails

What I need to know:

1. What is a network?			
2. Why are passwords used?			
3. What are the 5 rules for setting a strong password?			
4. Name 2 other methods of security			
5. What is email short for?			
6. What does Cc stand for?			
7. What is Bcc?			
8. How do you attach a file to an email?			
9. What is the difference between the internet and the WWW?			
10. What is cloud storage?			
11. What are the advantages and disadvantages and cloud computing?			
12. Name 3 examples of cloud storage			
13. What is personal information?			
14. What is social engineering?			
15. Describe the cyber aware behaviours			